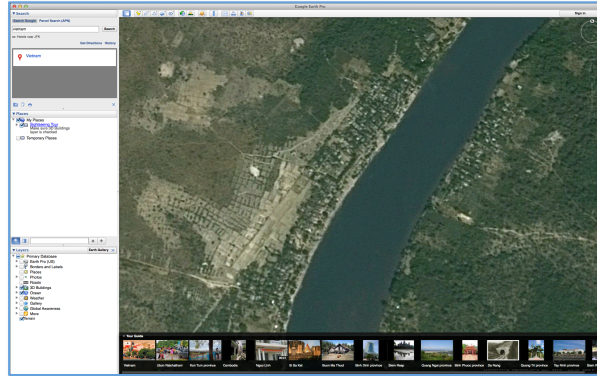
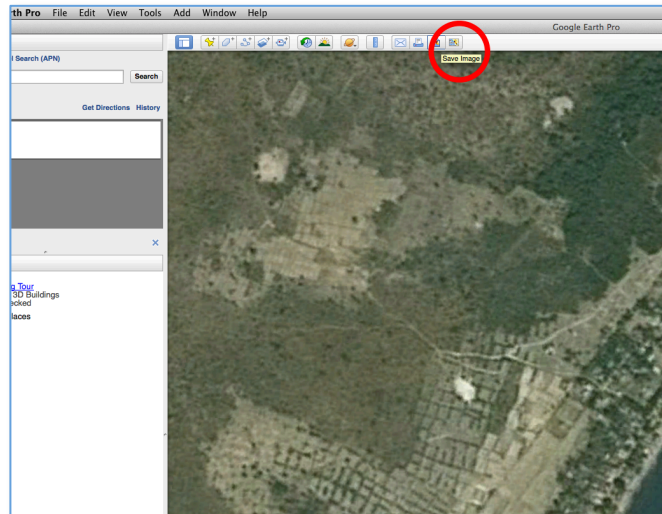


Instructions for Finding & Printing a Map on Many Sheets of Paper

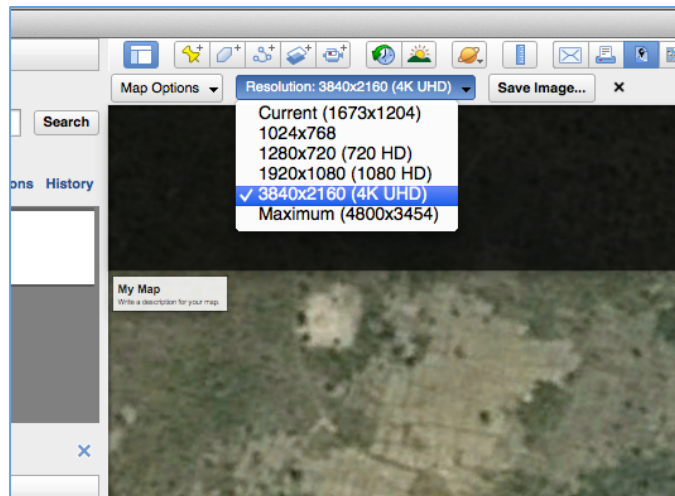
1. Download Google Earth Pro [here](#), then install and open Google Earth Pro.
2. When it asks you to sign in, enter your email address and use **GEPFREE** as the key.
3. Search for the location you want a map of:



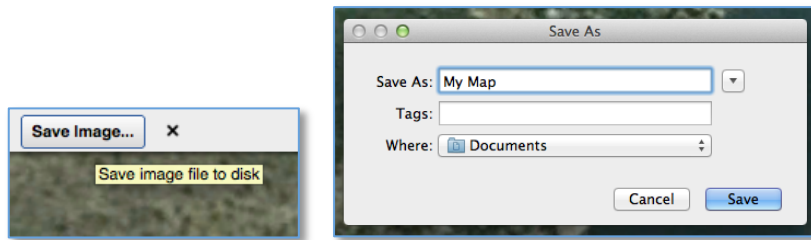
4. Go to File, Save, Save Image, or select the appropriate icon. A toolbar will pop up above the map:



5. A drop down menu will allow you to choose resolution. Choose the maximum or second to maximum:



6. Save image.

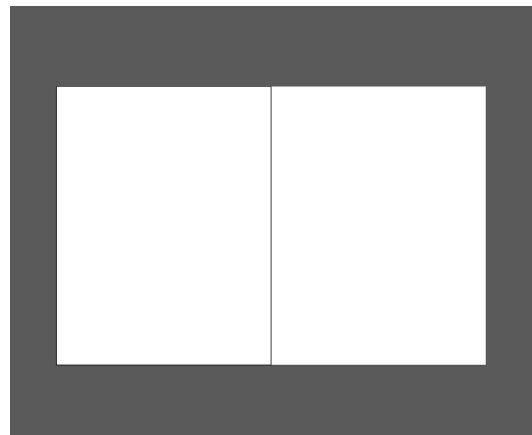
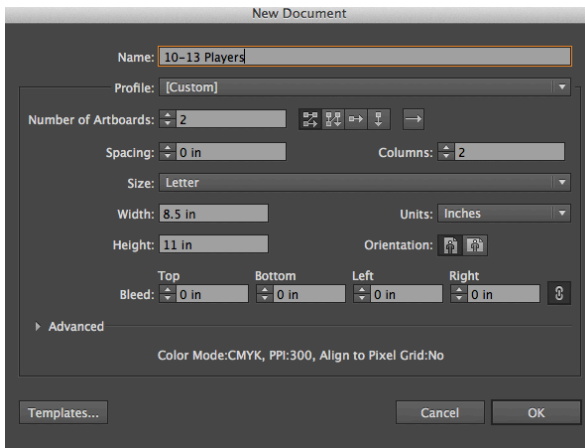


7. Open Adobe Illustrator (or download a free trial [here](#)).

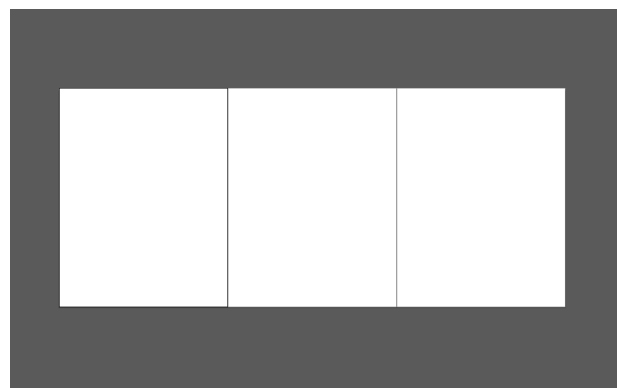
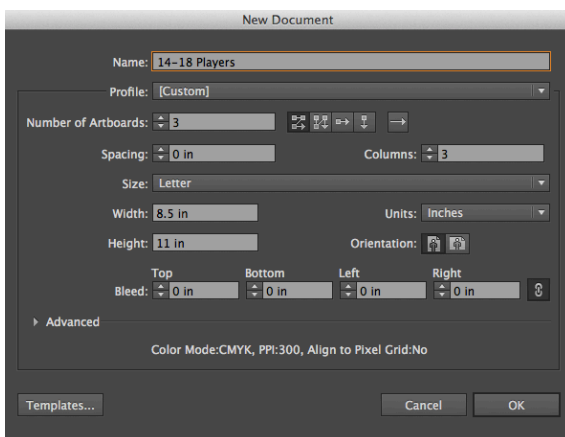


8. Create a new document with one of the following setups.

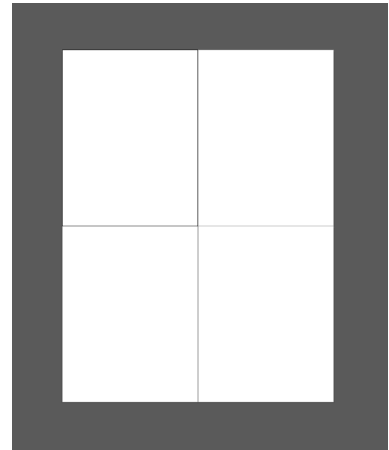
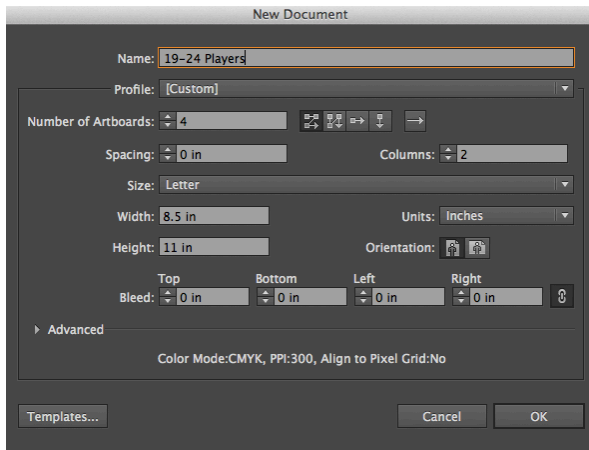
10-13 Players



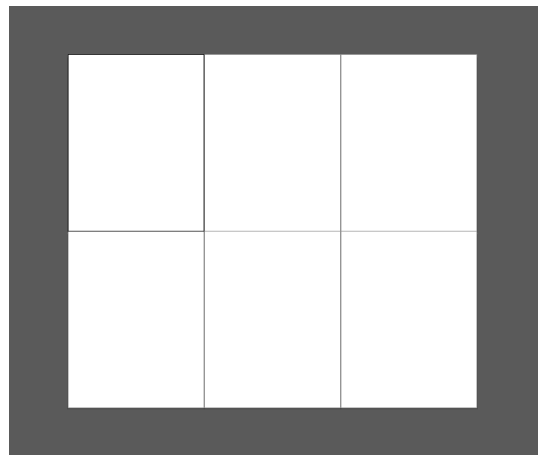
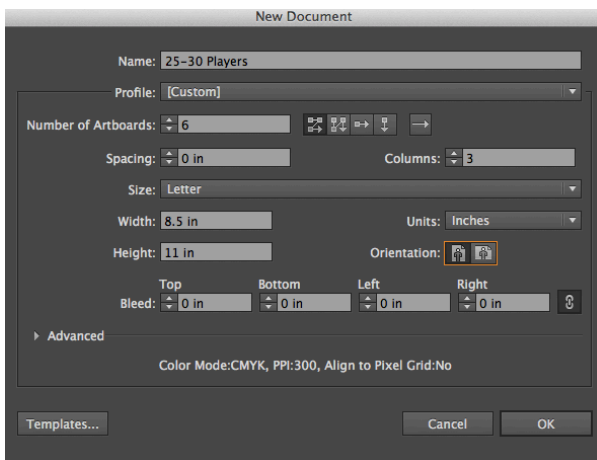
14-18 Players



19-24 Players

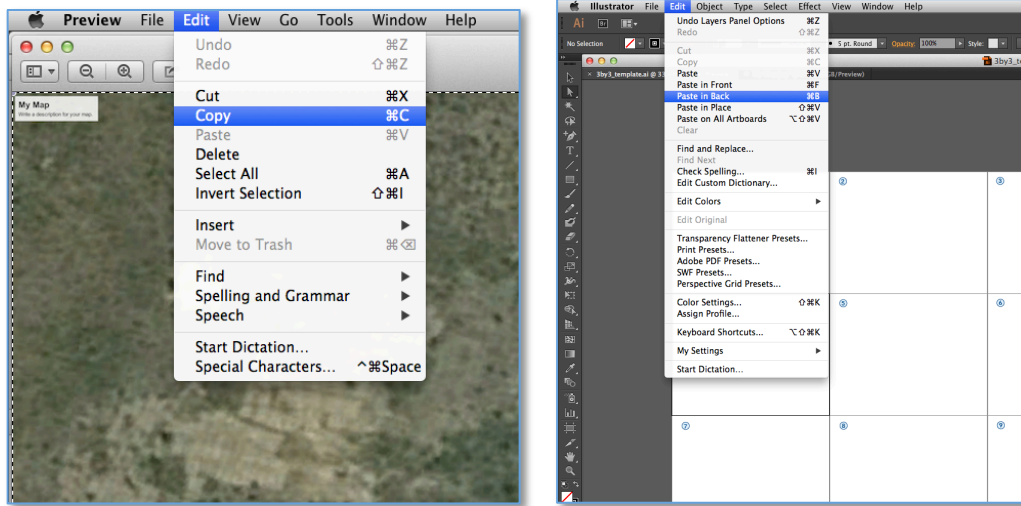


25-30 Players

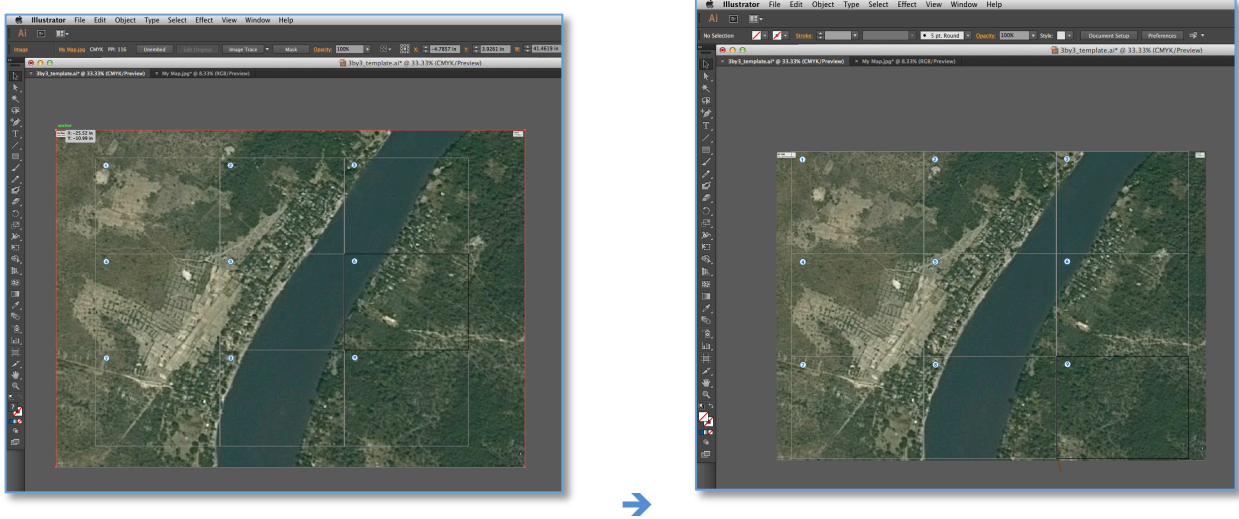


- If you create the document yourself, make sure the art boards have a spacing of 0 inches. Also make sure the size is set to the standard letter size: 11x8.5 inches. Set the bleed to 0.

9. The document will look like a grid, with each rectangle representing a separate piece of paper. Copy and paste your map image onto the grid, and resize accordingly. Only the part of the image within the grid will print.



- Copy and paste your image into Illustrator.



- Resize as desired to fit grid.

10. Print your document. Each paper will have a different part of your map.